



FORMATION EVALUATION LOG

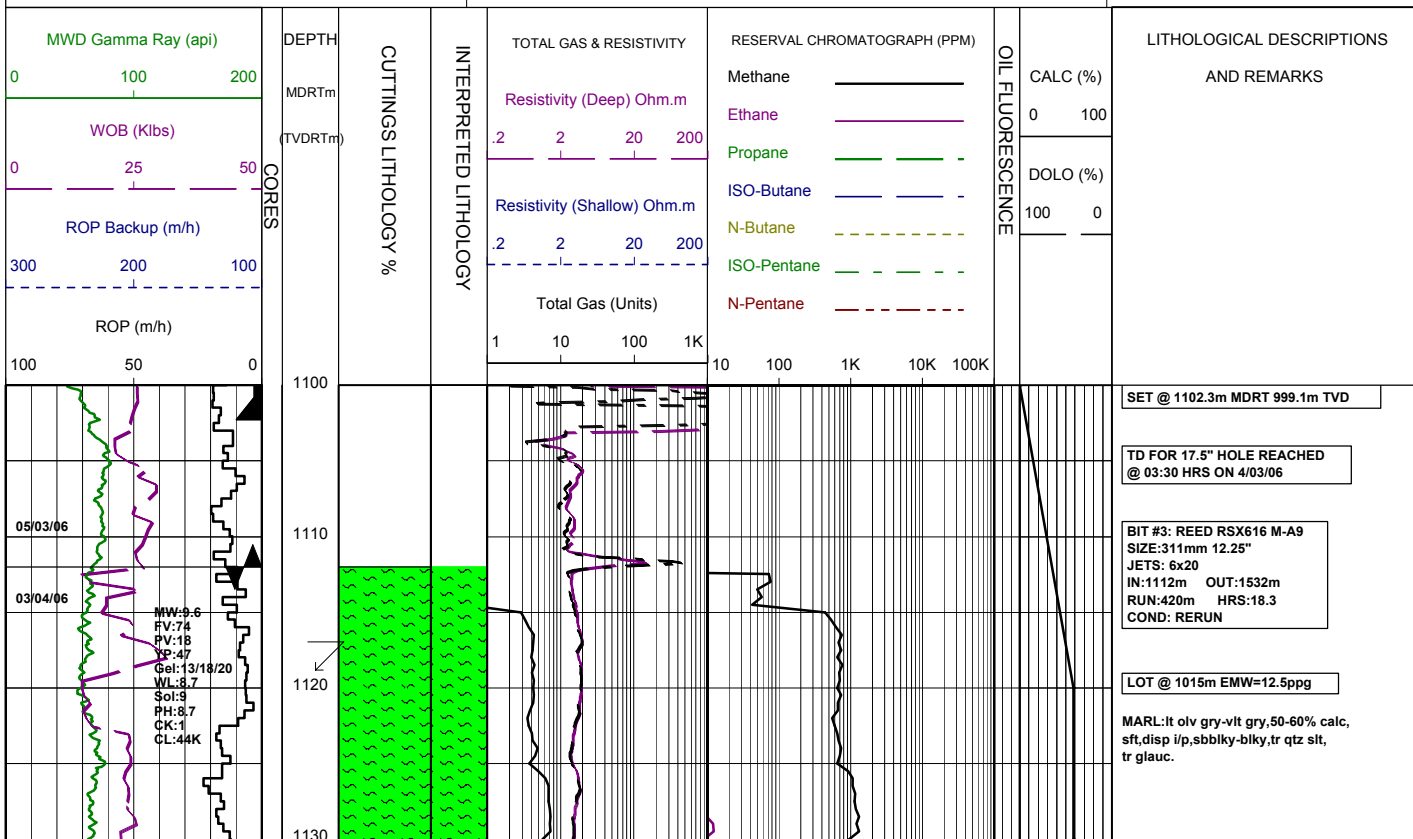


WELL : BASKER-3

FROM (m): 1100 TO (m): 2320 SCALE: 1/ 500

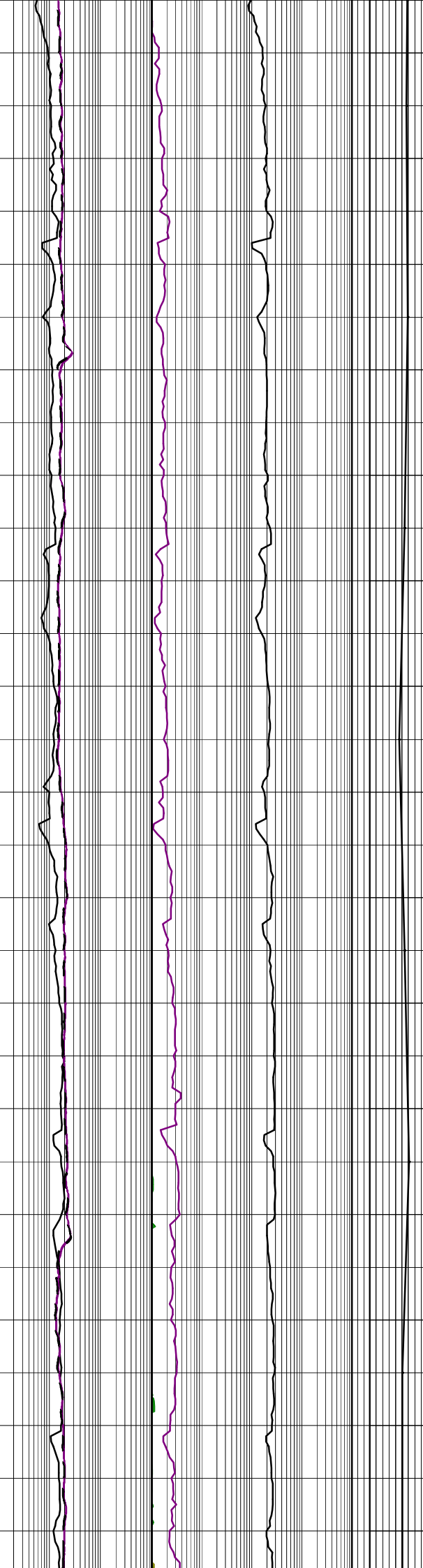
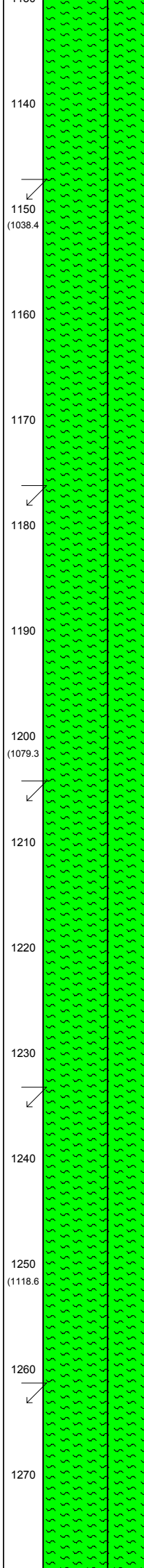
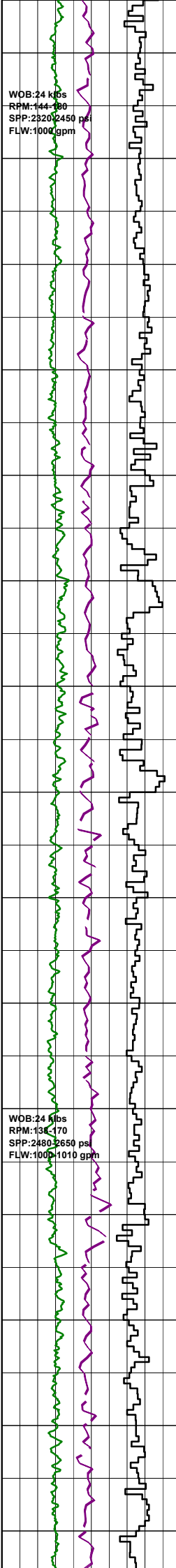
Country : AUSTRALIA	Latitude : 38°18'42.44"S	HOLE / CASING INFO 17 1/2" Hole to (mMDRT) : 1112m	Spud Date : 01-03-2006
Basin : GIPPSLAND	Longitude : 148°43'29.78"E	12 1/4" Hole to (mMDRT) : xxxm	Total Depth Date : xx-03-2006
Field : BASKER	UTM Co-ord X (m E) : 650106.2	13 3/8" Shoe at (mMDRT) : xxx.xm	Total Depth (mRT) : xxxm
Permit : VIC/L26	UTM Co-ord Y (m N) : 5761989.6	9 5/8" Shoe at (mMDRT) : xxx.xm	T.V.D. (mSS MSL) : 3085m
Well Type : DEVELOPMENT	RT-LAT (m) : 21.5		Status : COMPLETED
Rig Name : OCEAN PATRIOT	RT-Seabed (m) : 175.1		

<h3>ABBREVIATIONS</h3> <p>MW MUD WEIGHT NB NEW BIT FV FUNNEL VISCOSITY RR RERUN BIT PV PLASTIC VISCOSITY CB CORE BIT YP YIELD POINT WOB WEIGHT ON BIT FC FILTER CAKE RPM REVS PER MINUTE SOL SOLIDS FLC FLOW CHECK WL FILTRATE CR CIRCULATE RETURNS SD SAND - % PR POOR RETURNS S SALINITY - PPM NR NO RETURNS RM MUD RESISTIVITY BG BACKGROUND GAS RMF MUD FILTRATE TG TRIP GAS C CARBIDE TEST STG SHORT TRIP GAS LAT LOGGED AFTER TRIP CG CONNECTION GAS DS DEVIATION SURVEY SG SWAB GAS SVG SURVEY GAS</p>	<h3>LITHOLOGY LEGEND</h3> <p>Claystone Limestone Brachiopoda Siltstone Dolomite Cement ar. Silt ar Coal Sponges Fine SST Gypsum Glauconite Medium SST Lithic Fragment Pyrite Coarse SST Foraminifera Iron Minerals Marl Fossils Mica Clay, Limestone Bryozoa Carb Fragments</p>	<h3>ENGINEERING LEGEND</h3> <p>Shoe ← FIT Mud loss Deviation survey DST Mud gain Test Sidewall Core Core RFT</p>
---	--	---



WOB:24 kips
RPM:144-160
SPP:2320-2450 psi
FLW:1000 gpm

WOB:24 kips
RPM:138-170
SPP:2480-2650 psi
FLW:1000-1010 gpm



KCL/PHPA/GLYCOL Mud System

MARL:lt olv gry-vlt gry,50-60% calc, sft-mod hd,sbblky-blky,tr qtz silt,tr carb spk & lam,tr foss,tr glauc.

Survey @ 1148.5m: 34.21° 131.2Az

MARL:lt olv gry-vlt gry,50-60% calc, sft-mod hd,sbblky-blky,tr qtz silt,tr carb spk & lam,tr foss,tr glauc.

Survey @ 1176.4m: 34.82° 130.13Az

MARL:lt olv gry-vlt gry,50-60% calc, sft-mod hd,sbblky-blky,tr qtz silt,tr carb spk & lam,tr foram,tr glauc.

Survey @ 1206.0m: 37.04° 128.6°Az

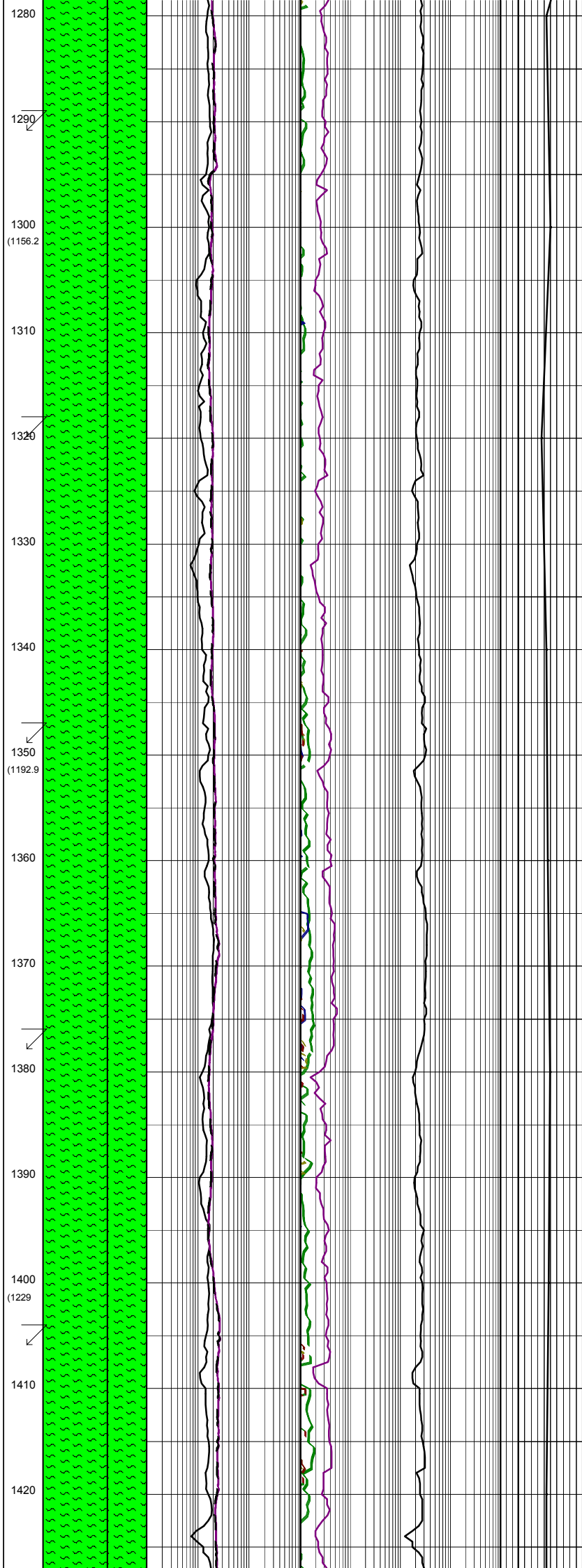
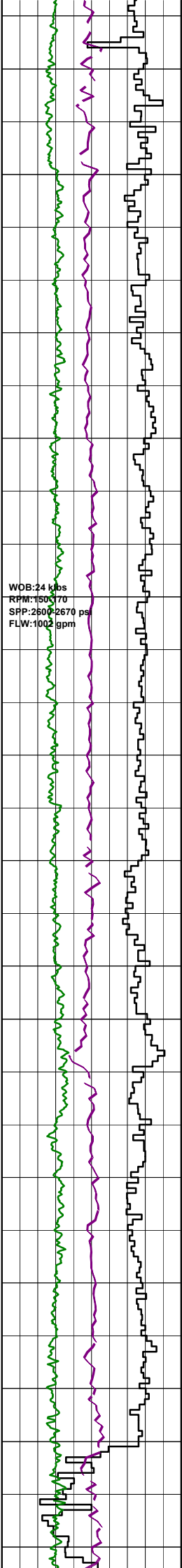
MARL:lt olv gry-v lt gry,50-60% calc,tr qtz silt tr carb spk & lam, vf qtz grn,tr foram,tr glauc,sft-mod hd,sbblky-blky.

Survey @ 1234.4m: 38.52° 128.8Az

MARL:lt olv gry-v lt gry,50-60% calc,yel gry,tr qtz silt,tr carb spk, 5-10% vf qtz grn,tr CLCAR,tr glauc, sft-mod hd,tr hd,blky,occ amor.

Survey @ 1262.9m: 40.82° 128.8Az

MARL:lt olv gry,50-60% calc,tr silt, carb spk,tr glauc,tr vf pyr,rr foram, v sft-sft,sbblky-amor.



Survey @ 1291.3m: 42.63° 129.6Az

MARL:lt olv gry,tr olv gry,40-50% calc,tr slit,tr carb spk,tr glauc, tr vf pyr,rr foram,sft frm,occ mod hd,pred sbbiky.

Survey @ 1320.0m: 42.79° 129.8Az

MARL:lt olv gry,tr olv gry,40-50% calc,tr slit,tr carb spk,tr glauc, tr vf pyr,rr foram,sft frm,occ mod hd,pred sbbiky.

Survey @ 1348.9m: 42.77° 129.3Az

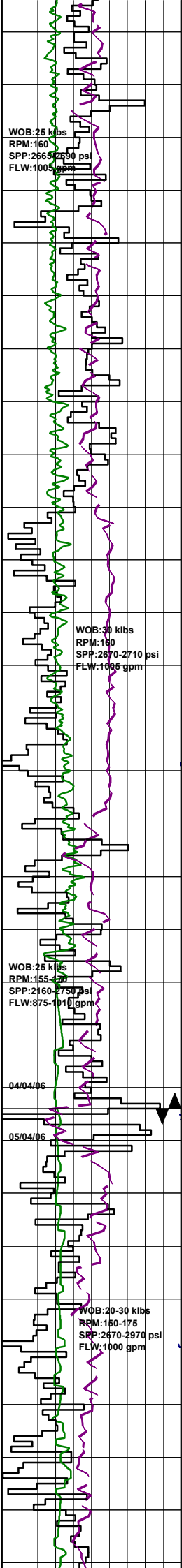
MARL:lt olv gry-olv gry,40-50% calc, tr slit,tr f-med qtz grn,tr glauc, rr CLCAR,tr pyr,tr carb spk,sft frm, sbbiky,occ amor.

Survey @ 1377.7m: 43.56° 129.6Az

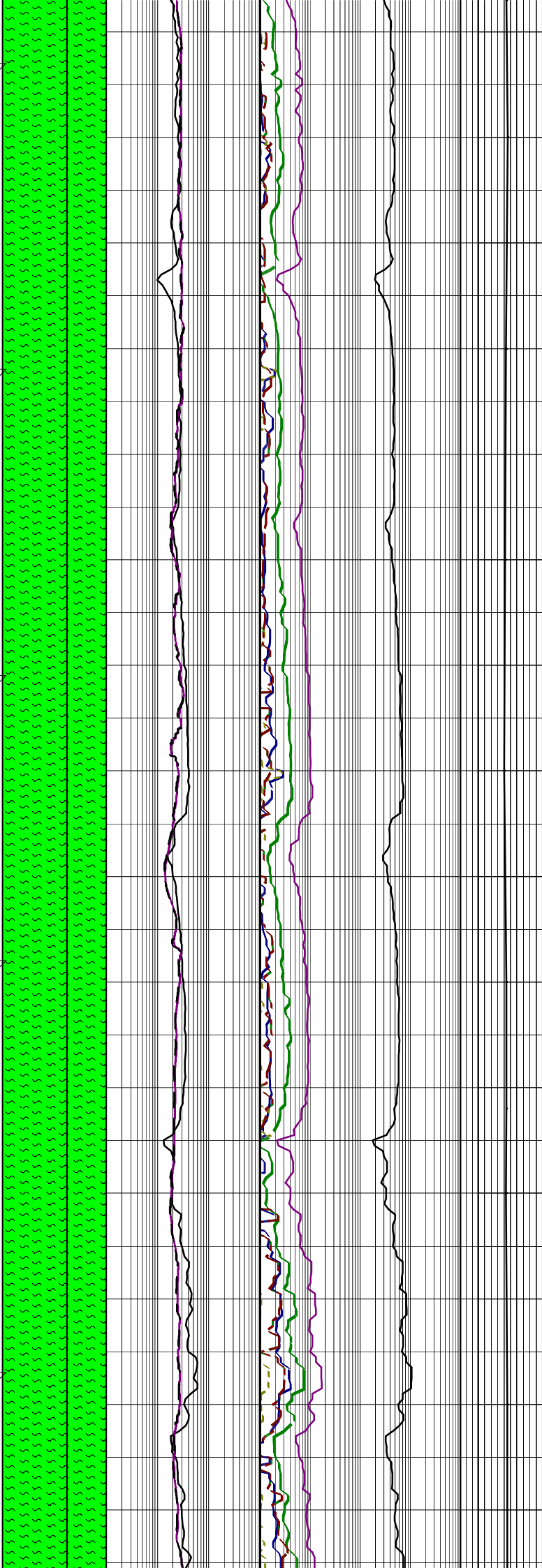
MARL:lt olv gry-olv gry,40-50% calc, tr slit,tr f-med qtz grn,tr glauc,tr pyr,tr carb spk,sft frm,sbbiky,occ amor.

Survey @ 1406.3m: 45.07° 130.1Az

MARL:lt olv gry-olv gry,40-45% calc, tr slit,tr glauc,tr fg pyr,tr carb spk,sft frm,sbbiky.



1430
1440
1450 (1264.5)
1460
1470
1480
1490
1500 (1300.4)
1510
1520
1530
1540
1550 (1336.6)
1560
1570



Survey @ 1435.0m: 45.15° 130.1Az

MARL: lt olv gry-olv gry, 40-45% calc, slty, tr glauc, tr vf pyr, tr carb spk, sft frm, com mod hd, sbbiky.

Survey @ 1463.6m: 44.21° 131.6Az

MARL: lt olv gry-olv gry, 40-45% calc, slty, mnv vf aren, tr carb spk, rr pyr lam, frm-mod hd, sbbiky-biky.

Survey @ 1492.3m: 43.35° 131.5Az

MARL: lt olv gry-olv gry, 40-50% calc, slty, mnv vf aren, tr carb spk, rr pyr lam, frm-mod hd, sbbiky-biky.

Survey @ 1520.8m: 43.60° 132.1Az

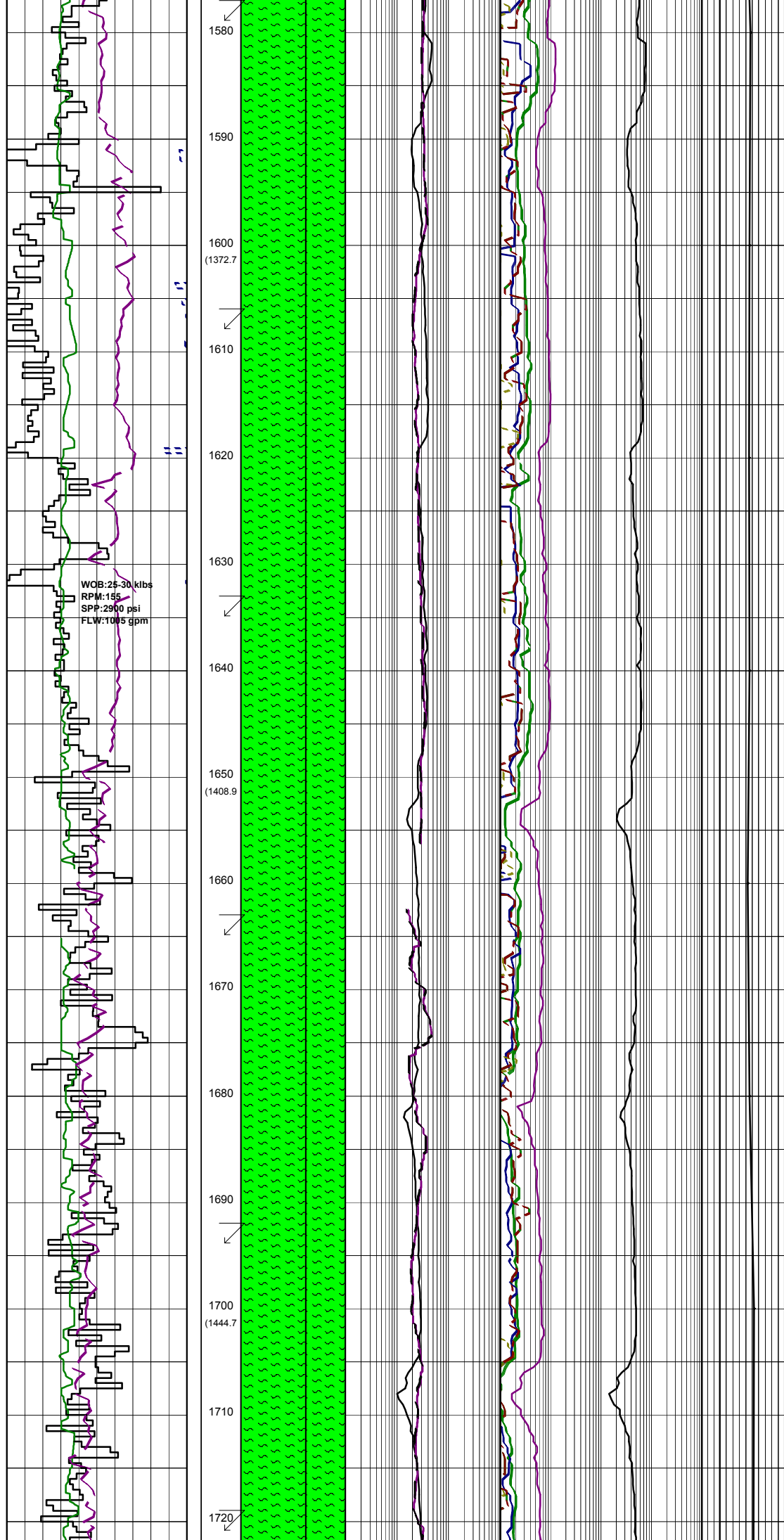
MARL: lt olv gry-olv gry, 40-45% calc, slty, mnv vf aren, tr carb spk, rr pyr lam, frm-mod hd, sbbiky-biky.

BIT #3RR1: REED RSX616 M-A9
SIZE: 311mm 12.25"
JETS: 6x20
IN: 1532m OUT: xxxxm
RUN: xxm HRS: xxx
COND:

MARL: lt olv gry, lt gry-med lt gry, 20-30% calc, slty, tr vf qtz grn, frm-mod hd, rr hd, sbbiky-biky.

Survey @ 1558.1m: 44.32° 131.2Az

MARL: lt olv gry, lt gry-med lt gry, occ calc, slty i/p, tr vf qtz grn, tr pyr, tr glauc, frm-mod hd, sft i/p, rr hd, sbbiky-biky.



Survey @ 1578.7m: 43.65° 134.2°Az

MARL: it olv gry, lt gry-med lt gry, slty i/p, tr vf qtz grn, tr pyr, tr glauc, frm-mod hd, sft i/p, rr hd, sbbiky-blky.

Survey @ 1607.3m: 43.11° 133.8°Az

MARL: med lt gry-lt olv gry, olv gry, slty, 40-45% calc, tr vf pyr, tr glauc, tr carb spk, sft-frm, occ mod hd, sbbiky-blky.

Survey @ 1635.9m: 43.81° 134.5°Az

MARL: med lt gry-lt olv gry, olv gry, slty, 40-45% calc, tr vf pyr, tr glauc, tr carb spk, sft-frm, occ mod hd, sbbiky-blky.

Survey @ 1664.5m: 44.19° 133.4°Az

MARL: olv gry, slty, 40-45% calc, tr vf pyr, tr glauc, tr carb spk, sft-frm, occ mod hd, sbbiky-blky.

Survey @ 1693.1m: 44.75° 134.1°Az

MARL: olv gry, occ lt olv gry, slty, pred 40-45% calc, tr v calc, tr vf pyr, tr glauc, tr carb spk, sft-frm, occ mod hd, sbbiky-blky.

Survey @ 1721.7m: 44.33° 132.8°Az

WOB: 25-30 klbs
RPM: 155
SPP: 2900 psi
FLW: 1015 gpm

WOB:20-26 klbs
RPM:158
SPP:2900 psi
FLW:990 gpm

1730

1740

1750

(1480.4)

1760

1770

1780

1790

1800

(1516.3)

1810

1820

1830

1840

1850

(1552.1)

1860

1870

MARL:olv gry,slty,pred 40-45% calc,
tr vf pyr,tr glauc,tr carb spk,
sft frm,occ mod hd,sbbiky-blky.

Survey @ 1750.4m: 44.18° 131.7°Az

MARL:olv gry,slty,pred 40-45% calc,
tr vf pyr,tr glauc,tr carb spk,
sft frm,occ mod hd,sbbiky-blky.

Survey @ 1779.2m: 44.25° 130.5°Az

MARL:olv gry,slty,pred 40-45% calc,
tr vf pyr,tr glauc,tr carb spk,
sft frm,occ mod hd,sbbiky-blky.

Survey @ 1807.9m: 44.00° 128.9°Az

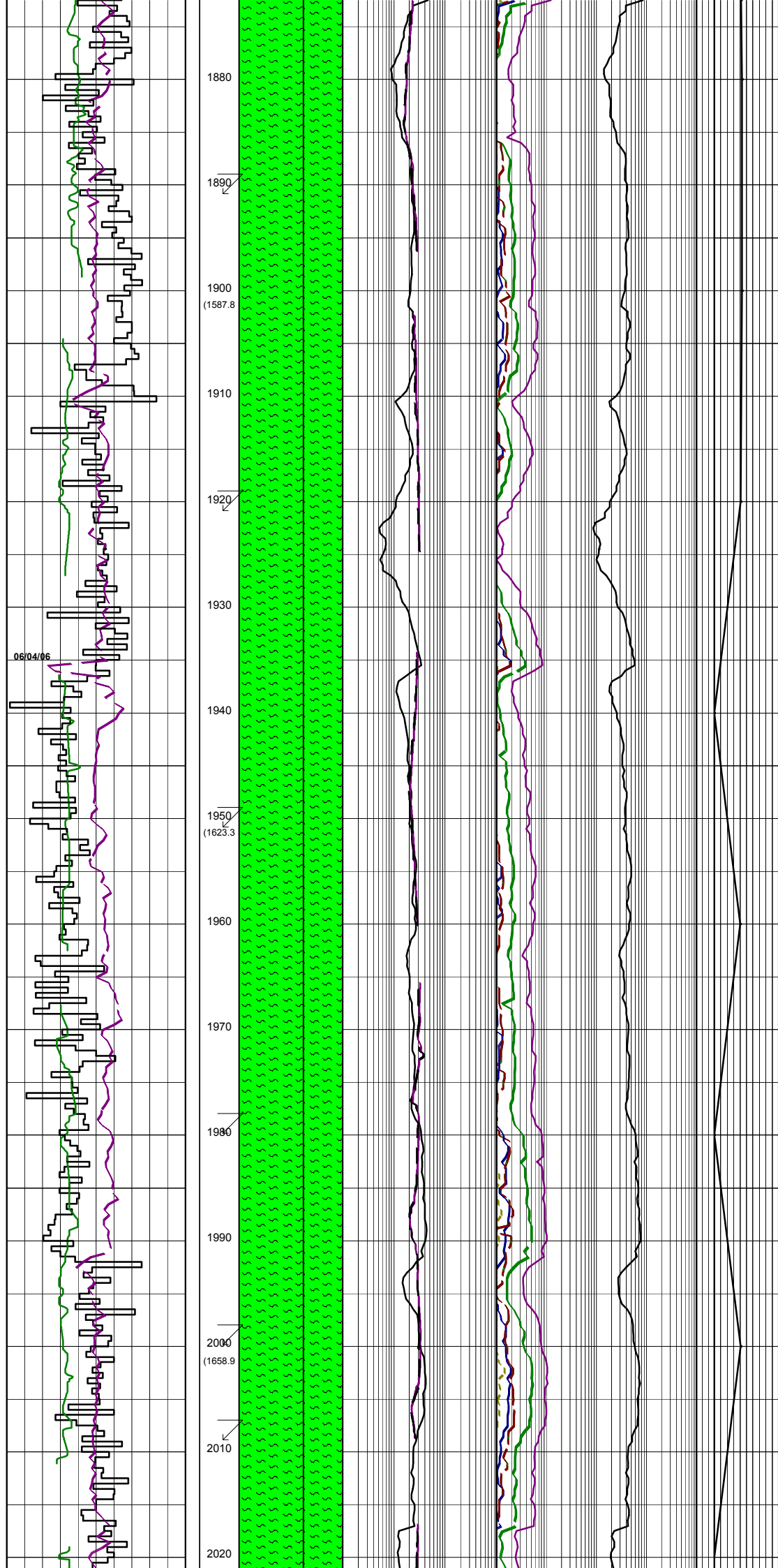
MARL:olv gry,occ lt olv gry,50%
calc,tr slt,tr vf pyr,tr glauc,
tr foss,tr carb spk,frm-mod hd,
sbbiky-blky.

Survey @ 1836.7m: 44.28° 128.4°Az

MARL:olv gry,40% calc,tr slt,
tr vf pyr,tr glauc,tr foss,tr carb
spk,frm-mod hd,sbbiky-blky.

Survey @ 1865.5m: 44.43° 128.0°Az

WOB:25 klbs
RPM:155
SPP:2500 psi
FLW:950-990 gpm



MARL:olv gry,40% calc,tr slit,tr
vf pyr,tr glauc,tr foss,tr carb
spk,frm-mod hd,sbbiky-blky.

Survey @ 1891.2m: 44.70° 127.5°Az

MARL:olv gry,40% calc,tr slit,tr
vf pyr,tr glauc,tr foss,tr carb
spk,frm-mod hd,sbbiky-blky.

Survey @ 1922.9m: 44.64° 126.8°Az

MARL:lt-med gry,olv gry,40% calc,tr
slit,tr glauc,tr carb spk & lamn,
frm-mod hd,sbbiky-blky.

Survey @ 1951.1m: 44.88° 127.9°Az

MARL:med gry-med dk gry,olv gry,40%
calc,tr slit,tr glauc,tr carb spk & lamn,
frm-mod hd,sbbiky-blky.

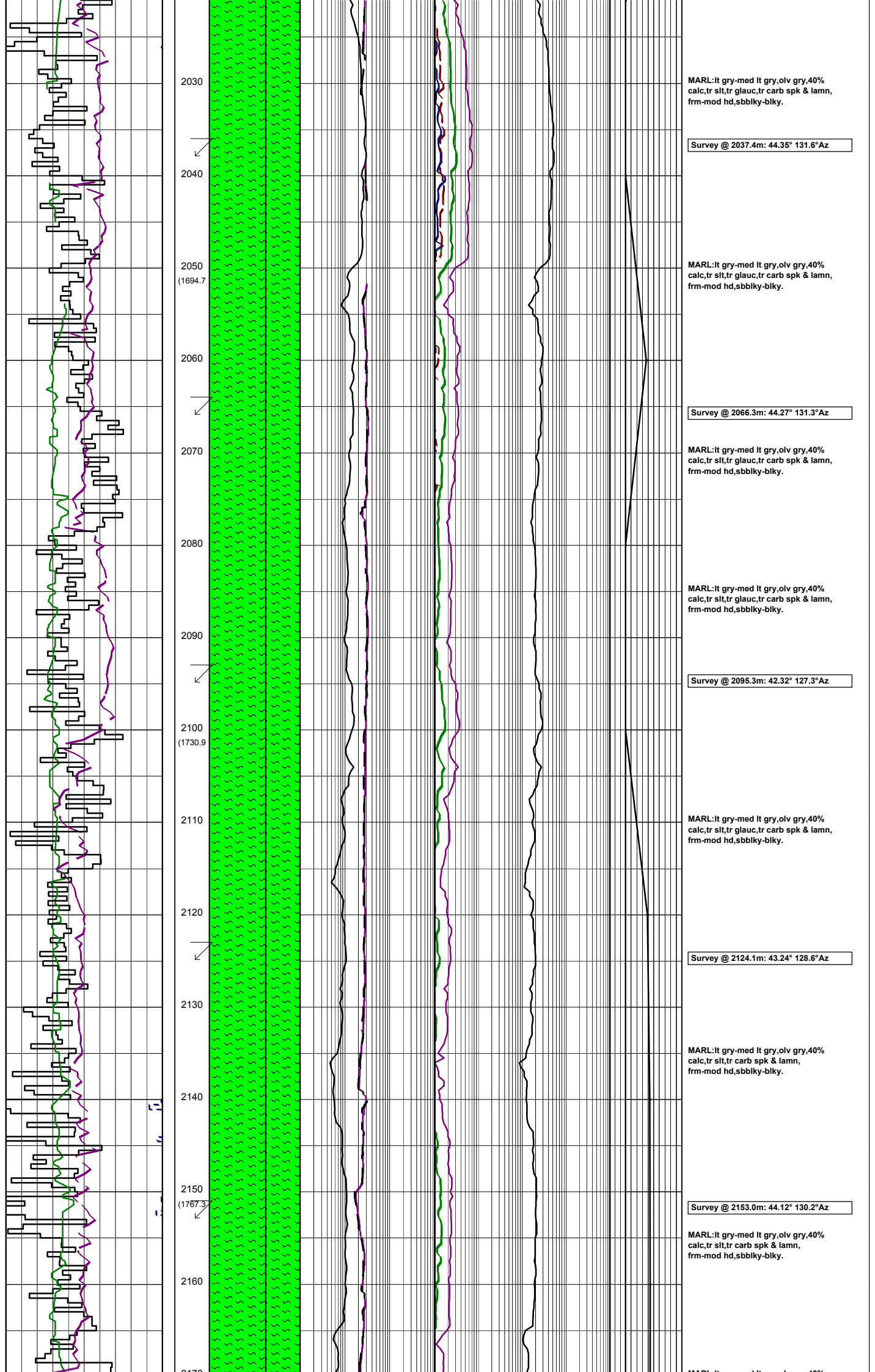
MARL:med gry-med dk gry,olv gry,40%
calc,tr slit,tr glauc,tr carb spk & lamn,
frm-mod hd,sbbiky-blky.

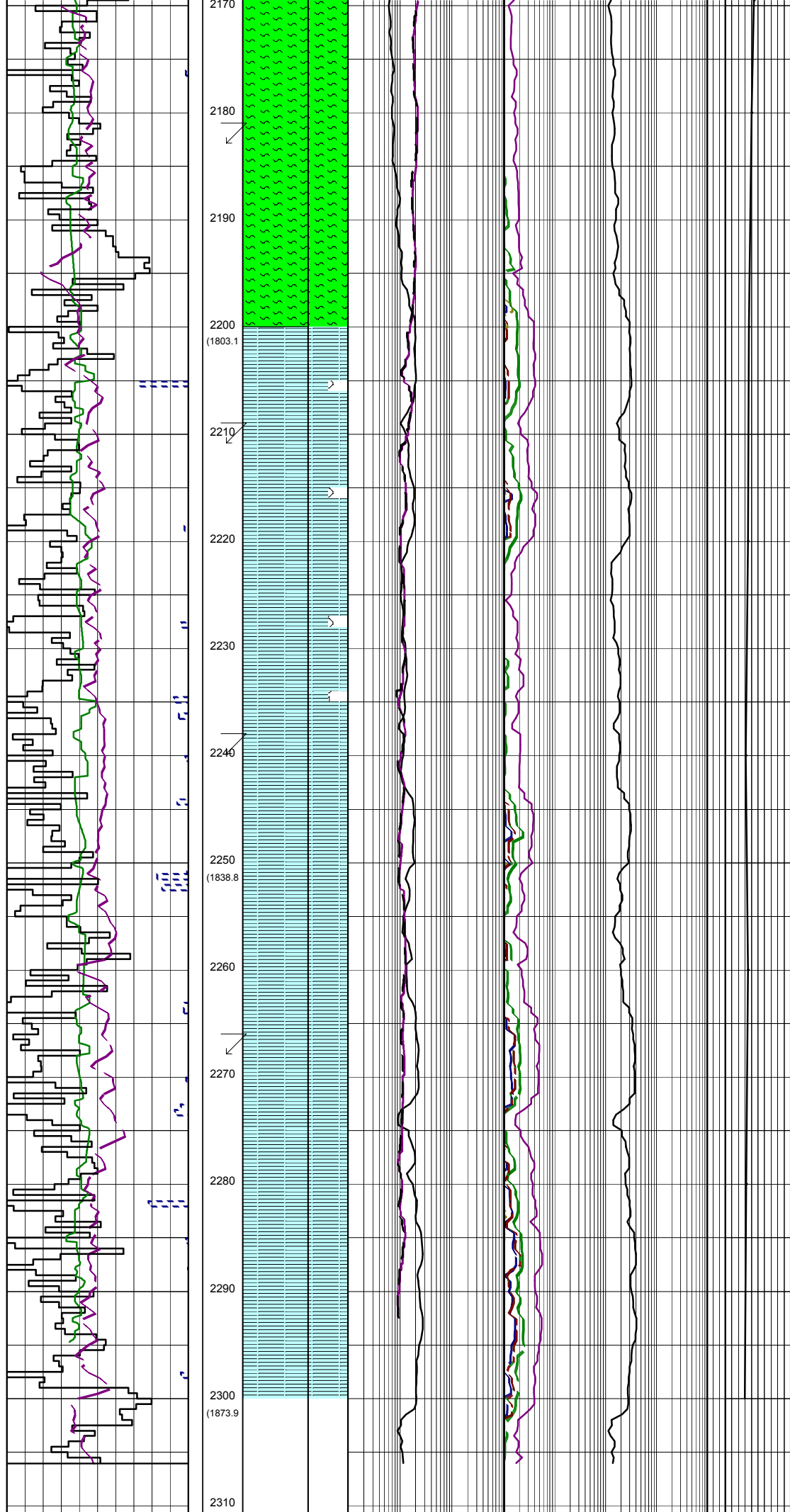
Survey @ 1979.8m: 44.48° 129.5°Az

MARL:med gry-med dk gry,olv gry,40%
calc,tr slit,tr glauc,tr carb spk & lamn,
frm-mod hd,sbbiky-blky.

Survey @ 2008.6m: 44.22° 131.1°Az

MARL:lt gry-med lt gry,olv gry,40%
calc,tr slit,tr glauc,tr carb spk & lamn,
frm-mod hd,sbbiky-blky.





MARL:lt gry-med lt gry,olv gry,40% calc,tr slit,tr carb spk & lamn, frm-mod hd,sbbiky-blky.

Survey @ 2181.8m: 44.46° 130.2°Az

MARL:lt gry-med lt gry,olv gry,20-30% calc,tr slit,tr carb spk,tr 20-30% vf qtz grn,cly ip,frm-mod hd,sbbiky-blky.

Survey @ 2210.6m: 44.13° 130.2°Az

CALCAREOUS CLAYSTONE:lt-med gry, olv gry,20-30% calc,tr slit,tr glauc,tr foss frag,tr 20 % vf qtz grn,sft-frm, sbbiky,amor ip,occ disp.

CALCAREOUS CLAYSTONE:lt-med gry, olv gry,20-30% calc,tr slit,tr glauc,tr foss frag,tr pyr,tr 30 % vf qtz grn, sft-frm,sbbiky,amor ip,occ disp.

Survey @ 2239.3m: 44.76° 130.9°Az

CALCAREOUS CLAYSTONE:lt-med gry, olv gry,20-30% calc,tr slit,tr glauc,tr foss frag,tr pyr,tr 30 % vf qtz grn, sft-frm,sbbiky,amor ip,occ disp.

Survey @ 2267.9m: 45.28° 131.3°Az

CALCAREOUS CLAYSTONE:Lt med gry,olv gry,occ med gry,20% calc to glauc to slit,tr carb spk,tr 20% vf qtz grn,tr pyr,sft-mod hrd, sbbiky-blky,tr calcarenite, vf gry, sft-frm,vf-f,wl srtld sbrnd-rnd,8% Por.

CALCARIOUS CLAYSTONE:lt-med gry olv gry,tr carb spks,tr qtz,sft-mod hd,sbbiky-blky.

POOH to Casing shoe for BOP repairs

